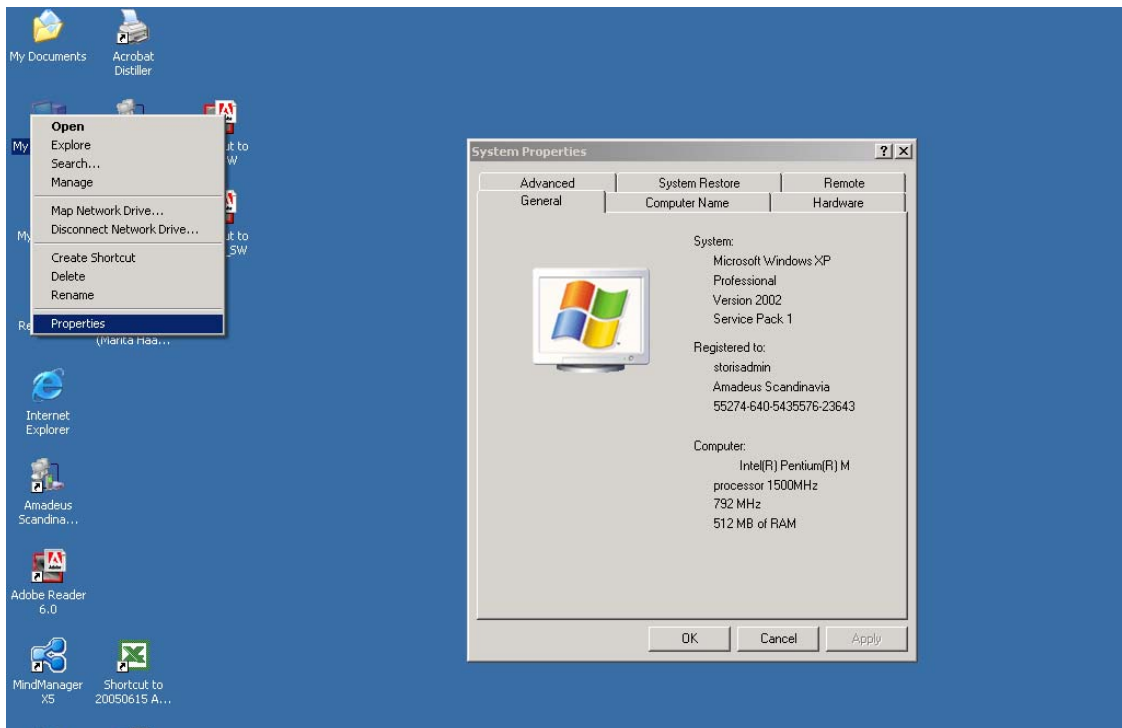


How to find the technical information on your computer:

Operating system, processor power (CPU), memory (RAM):

Make a right mouse click over “My Computer” on the desktop.



Click on “Properties” and “System Properties”

Operating system: *windows XP professionals*

Service packs: *1*

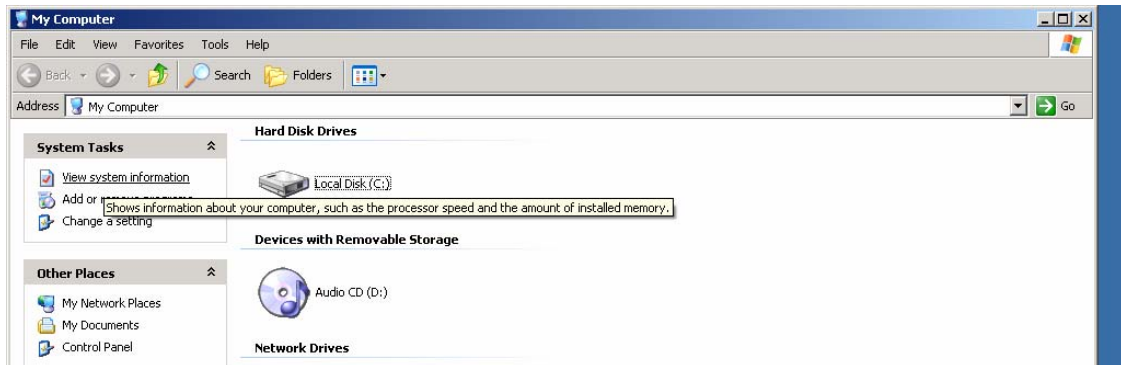
CPU: *processor 1500MHz*

RAM: *512 MB*

Available hard disc space:

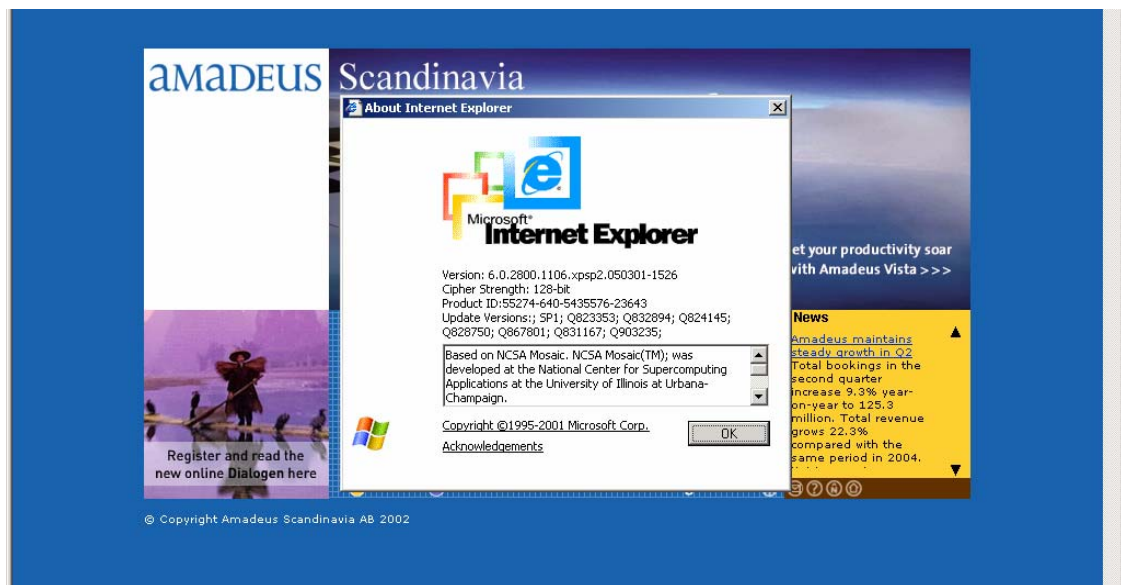
Make a right mouse click over “My Computer” and click “Open”. Place the mouse over the icon -or click on the icon.

Available Hardware space: *ex 28,2 GB*



Internet Explorer

Start Internet Explorer, go to “Help” -> “About Internet Explorer”

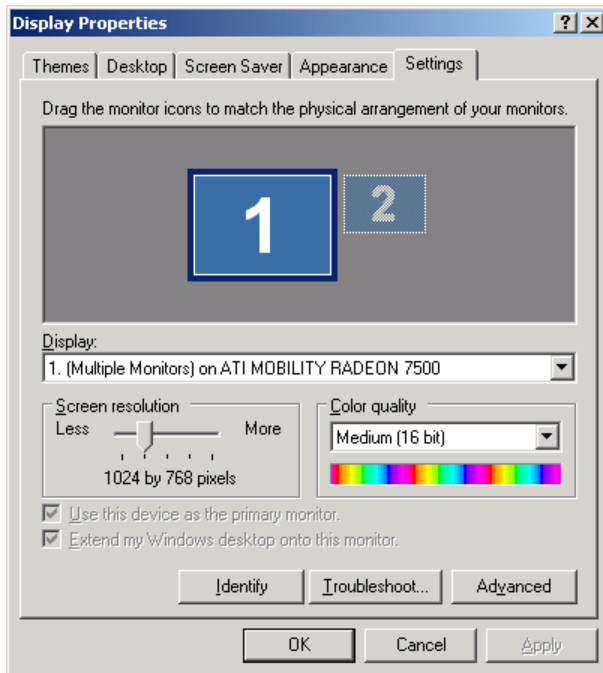


Internet Explorer version : *ex 6.0*

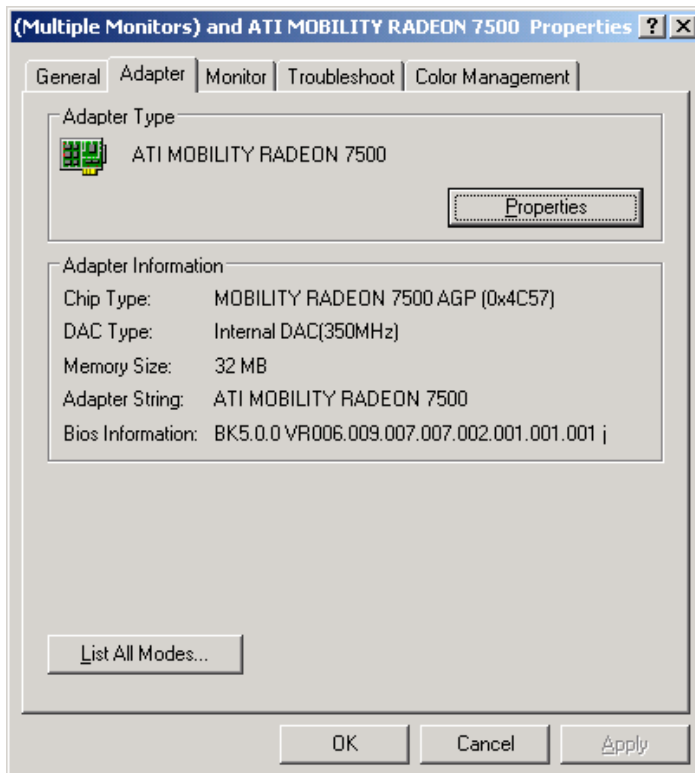
Video monitor and memory

Size of monitor: *ex 15 tum*

To get the memory of the monitor, place the mouse on the desktop and make a right click → select “Display Properties” → select “Settings”



Click on the Adapter and you will find the memory of the monitor:
Ex 32 MB



Access type

In your agreement with Amadeus Scandinavia AB you will find the access type (Internet Access or IP/VPN)

Terminal server:

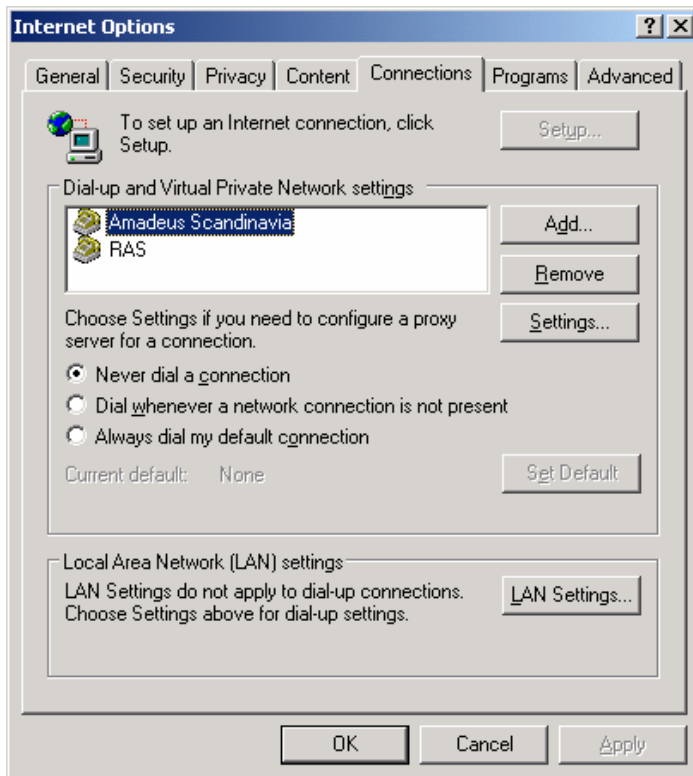
Ask your IT supplier if you are working in a Terminal Server /Citrix environment

Firewall

Ask your IT supplier

Proxy server:

Start Internet Explorer → select “Tools” → select “Internet options” → select “Connections” → select “Lan Settings”



Ex: no LAN settings (that is no proxy server)