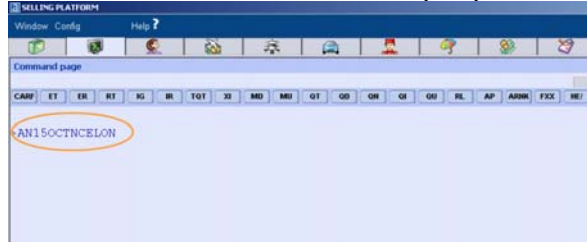


Booking entries

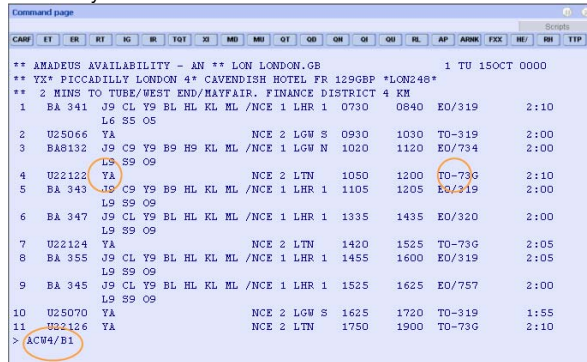
Amadeus Neutral Availability

>AN15OCTNCELON is the standard availability entry



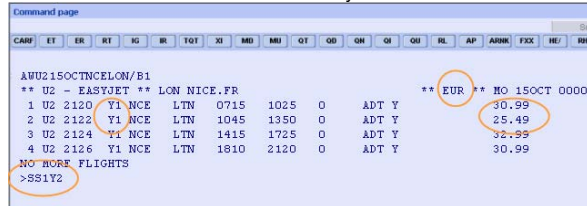
Airline Availability and Fare Display

>ACW3/B1 From the neutral display, agents request the airline availability screen



Segment sell

>SS1Y1 is the standard short sell entry



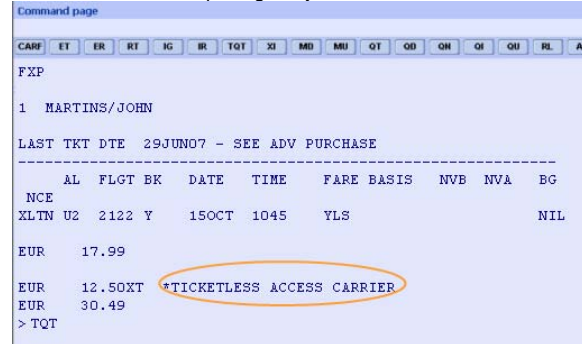
PNR elements

- >NM1MARTINS/JOHN = name entry (as it appears on passport)
- >AP 0123456789 = phone number (optional)
- >APE-JMARTINS@MYEMAIL.COM = only one e-mail address is sent to the airline
- >TKOK = Ticketing arrangement
- >FPCCVI4190004356302574/0807*CV123 = Form of Payment
- >SR XBAG U2 NN1/P1 = chargeable service (e.g. 1 bag)

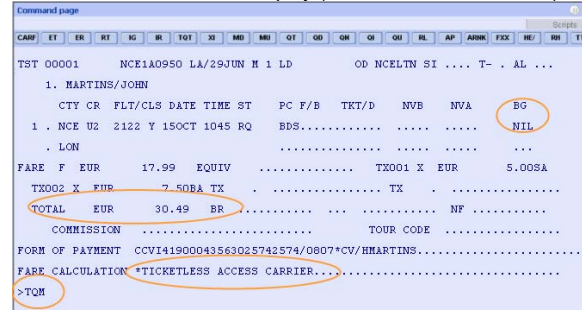


PNR pricing

>FXP is the standard pricing entry

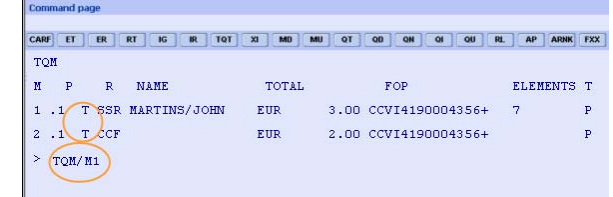


>TQT is the standard TST display (Transitional Stored Ticket)

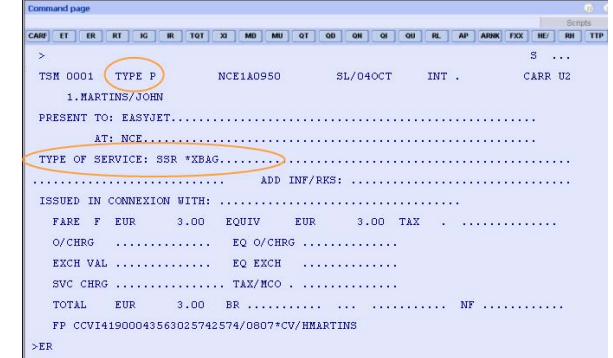


SSR & Credit Card display

>TQM is the standard TSM display (Total Stored Miscellaneous)



>TQM/M1 is index selection entry



End of transaction

>ER is the standard entry to end the transaction. There is no ticket issuance step.



Amadeus Ticketless Access

Amadeus Ticketless Access offers agents a full booking process for Low Cost Carriers, seamlessly integrated with existing booking workflow. Flights are included in the familiar Amadeus principal displays. A secondary display shows the last seat availability and associated fares. Booking easyJet flights with your client's credit card is straightforward. Mid and Back Office reporting and accounting processes are also fully integrated and use the standard Amadeus Interface Record.

Booking flow

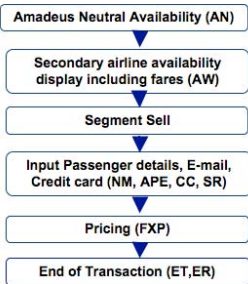
The Amadeus Ticketless Access booking flow is very similar to that of a full service carrier with additional checks:

- > E-mail address and form of payment becomes mandatory elements before End of Transaction
- > The payment is processed after the End of Transaction. There is no issuance step (TTP).

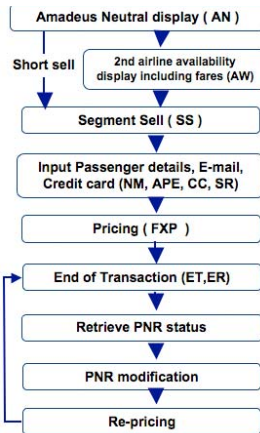
Amadeus Ticketless Access will be released in two phases:

During the first phase, agents will not have the ability to modify or cancel a booking in Amadeus, they will need to contact easyJet call centre. Modify and cancel functions will be available in the first quarter of 2008.

Phase 1, November 2007



Phase 2, Q1 2008



Contact

For information on **Amadeus Ticketless Access** please contact:
 Stéphane Lecourtois
 Product Manager, Amadeus Ticketless Access
slecourtois@amadeus.com

Booking entries (short & long)

Entry	Entry title
AN15OCTNCELON	Neutral Availability entry <i>New access level indicator, a dash (-), created for Ticketless Access carriers</i>
ACW3/B1	3 is the line number, /B is the number of passengers <i>New entry which will interactively display airline availability and fares. Number of passengers must be included</i>
SS1Y1	Short Sell entry <i>Standard short sell entry. Please note that during the first phase it will not be possible to sell from the Amadeus Neutral Availability displays</i>
NM1MARTINS/JOHN	Name entry <i>Please enter the name as it appears in the passport otherwise your customer may encounter problems at check-in</i>
APE-JMARTINS@MYEMAIL.COM	E-mail entry <i>This is a mandatory entry in order to confirm the booking. Two emails can be included in the Amadeus PNR but only one will be sent to the airline</i>
AP 0123456789	Phone Contact <i>This is an optional entry in order to complete the booking</i>
TKOK	TK entry <i>This is a mandatory entry to complete the PNR</i>
FPCCVI190004356302574/0807*CV123	Form of Payment entry <i>We advise that you enter the payment details before the pricing entry as the credit card fee is calculated at the time of pricing. It is not possible to end the booking without entering payment details first. The format will be available on the airline information page: GGAIUR2.</i>
SR XBAG U2 NN1/P1	Chargeable SSR entry <i>The list of accepted, bilateral SSRs (Special Service Requests) will be made available in the GGAIUR2</i>
FXP	Pricing entry <i>The standard pricing entry will interactively retrieve the pricing information from the airline inventory. This covers pricing for special services and credit card. The currency returned by the airline is the one related to the boarding point of the first segment.</i>
TQT	Entry to display a TST <i>Provides pricing information about the booking</i>
TQT/T1	Index Selection entry <i>Displays TST number 1 (Transitional Stored Ticket)</i>
TQM	TSM Index entry <i>Stores and displays SSR and credit card fee information</i>
TQM/M1	Index Selection entry <i>Displays TSM number 1 (Total Stored Miscellaneous)</i>
ER	End of Transaction and Redisplay PNR entry <i>Closure of the PNR</i>

Quick Card

Booking 
 through Amadeus
 Ticketless Access

November 2007

amadeus
 Your technology partner